



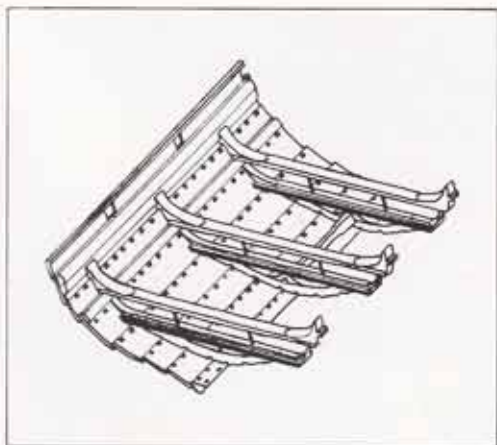
SEBBE ALS

Sebbe Als is an exact replica of a viking ship that sailed in Danish waters 1000 years ago.

The original was excavated in 1962 at Roskilde Fjord, near Copenhagen, together with four other ships. All five have been restored and are housed in a specially-built museum at Roskilde, where they serve as a monument to the shipbuilding skill of our ancestors.



Sebbe Als is built in the same way, and with the same tools as the original. Before building was commenced we reconstructed a number of tools from the viking period and learned how to use them. The National Museum kindly placed drawings, measurements and expertise at our disposal.



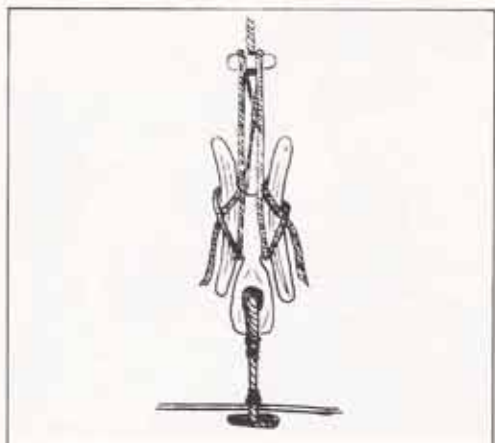
We began in 1968 by felling a couple of large oak trees. With the aid of wedges of iron and wood, adzes, planes, chisels, gimlets and 11,000 hours of sweat, these massive trunks were transformed into a ship.

It was a tremendous challenge for the youngsters involved; everything was made entirely by hand and often several attempts had to be made before a satisfactory result was obtained.



Every summer the society arranges various evening and week-end trips, and almost every year the ship makes a fairly long voyage. The hitherto longest and most eventful voyage was in 1972, when we sailed from Slesvig in Germany to Oslo in Norway, two of the most important commercial centres of the viking period. This was a

voyage of 373 nautical miles. The ship has had ample occasion to prove its seaworthiness in the course of these voyages.



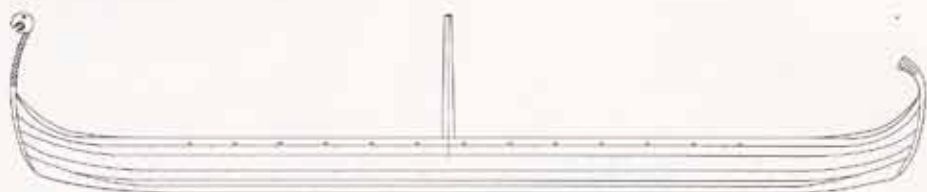
Sebbe Als is made and owned by Skibslaget Sebbe Als, Augustenborg. This society has 80 members, most of whom are, or have been, boy scouts. The society has also built a "Naust", which is a well-known type of Nordic dwelling from the viking period. This is where Sebbe Als is kept during the winter

months, and it is here that maintenance work and repairs are carried out. At one end of the long room is an open fire, a popular and often used meeting place.



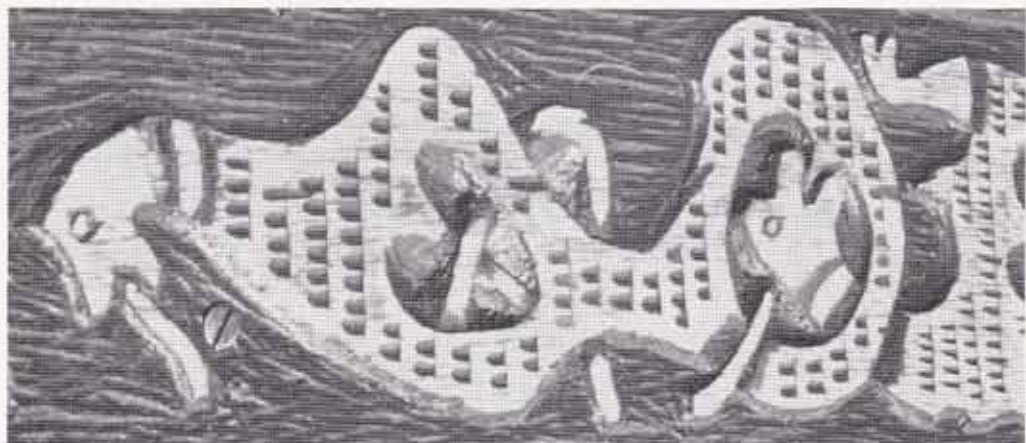
The society has given many youngsters an opportunity to become acquainted with life at sea and learn the meaning of endurance, tolerance and good comradeship.

A long voyage with a crew of 20-24 makes heavy demands on the individuals involved.



Weight : 3 tons
Number of oars: 24
Sail area : 42 m²
Mast height: 9 metres

On long voyages the ship sails with a complement of 20-24 crew members, while on short trips a complement of up to 30-35 is usual.



Skibslaget Sebbe Als
DK-6440 Augustenborg
Denmark

Composition: drp - Copenhagen
Printing: C. C. Biehl - Graasten
Lay-out and text: Sebbe Als, PFP 1976



WELCOME ABOARD



SAS SCANDINAVIAN AIRLINES
Serving 90 cities in 47 countries